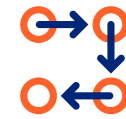




# Prospective risk adjustment and quality services

## Ensuring that member outcomes are considered at every stage of the care cycle



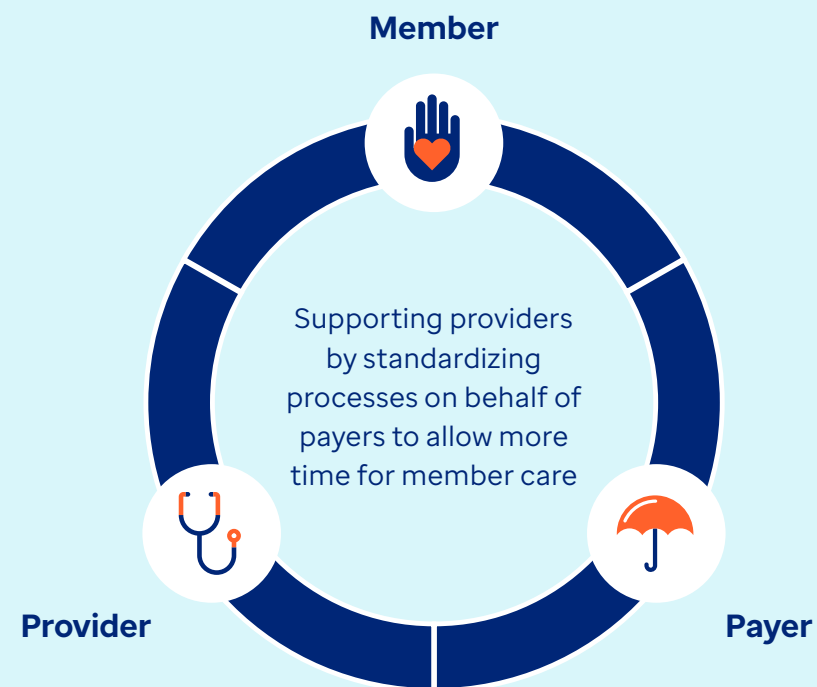
Multiple care modalities



Provider enablement



Member engagement



Optum® Prospective Solutions offers pre-visit and point-of-care support to help improve member outcomes. It does so through services that support early detection and ongoing evaluation of chronic conditions for Medicare Advantage (MA), Affordable Care Act (ACA), and Medicaid members on behalf of health plans. These services include prospective member assessments, digital integration strategy and implementation, in-person and virtual support, and member engagement campaigns.

Optum is a registered trademark of Optum, Inc. in the U.S. and other jurisdictions. All other brand or product names are the property of their respective owners. Because we are continuously improving our products and services, Optum reserves the right to change specifications without prior notice. Optum is an equal opportunity employer.  
© 2023 Optum, Inc. All rights reserved. WF11073380 07/23

### Meaningful results

**1K** Optum field team members

**15M** MA membership in Optum programs

**≈25K** Engaged provider groups

**≈3.5M** Annual member assessments



### A more robust service model for providers and payers

Equipping providers with actionable clinical insights, personalized member care gap information and administrative support helps create a workflow that prioritizes provider and member needs at the point-of-care and beyond.

Meeting providers where they are with multiple modalities for assessment submission:

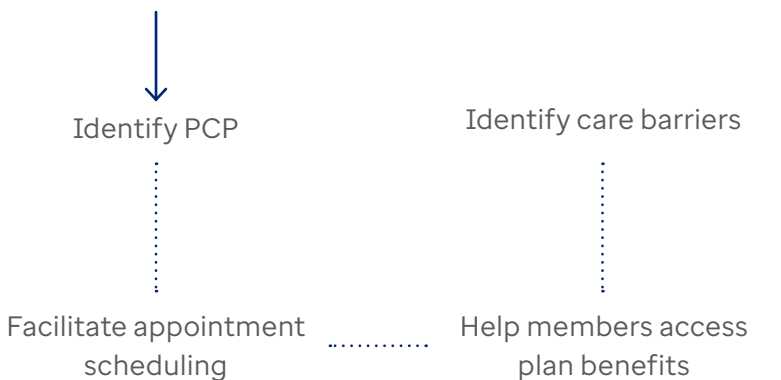
- Native workflow integration
- Integrated EHR applications
- Partnership integrations
- Optum Practice Assist portal
- Paper/PDF



### Member intervention strategies

Member-centric model uses social determinants of health (SDoH) to help identify and remove barriers to care.

#### Member outreach



**Find out how you can achieve an efficient, data-driven prospective risk adjustment program.**

**Visit:** [optum.com/prospective](https://optum.com/prospective) | **Email:** [empower@optum.com](mailto:empower@optum.com) | **Call:** 1-800-765-6807